

— CODENAME —

QUAD

at

mahindra Citadel

2 & 3 BHK Homes in Pimpri.

The project "Codename QUAD" is registered with MahaRERA as "Mahindra Citadel Phase 1" under MahaRERA no. P52100047656 and available on <https://maharera.mahaonline.gov.in>, valid up to 30.06.2028

Disclaimer: This Project is being developed by Mahindra Lifespace Developers Limited ("MLDL") in phased manner. This document is an artistic conceptualization for illustration and representation purpose only and does not purport to exactly replicate the project. This communication is purely conceptual and not a legal offering. The information contained herein is only indicative of the kind of development that is proposed in Phase I and is subject to change with requisite approvals. MLDL reserves the right to make any changes or alterations. T&C apply.



The project "Codename QUAD" is registered with MahaRERA as "Mahindra Citadel Phase 1" under MahaRERA no. P52100047656 and available on <https://maharera.mahareraonline.gov.in>, valid up to 30.06.2028

Disclaimer: This Project is being developed by Mahindra Lifespace Developers Limited ("MLDL") in phased manner. This document is an artistic conceptualization for illustration and representation purposes only and does not purport to exactly replicate the project. This communication is purely conceptual and not a capital offering. The information contained herein is only indicative of the kind of development that is proposed in Phase 1 and is subject to change with requisite approvals. MLDL reserves the right to make any changes or alterations. TSC apply.

MASTER PLAN

Master Plan



2 & 3 BHK Homes

- Open Air Lounge
- Multipurpose Sports Court
- Celebration Hall - 1
- Cinema Lounge
- Health Club - 1
- Rec Club
- Indoor Badminton Courts
- Indoor Kids Playzone
- Guest Rooms
- Celebration Lawn
- Swimming Pool and Kids Pool
- Jogging Track
- Cricket Nets
- Elders Park
- Work Pods
- Pet Pawklet

Map not to Scale. For representation purpose only.

The project "Codename QUAD" is registered with MahaRERA as "Mahindra Citadel Phase I" under MahaRERA no. P52100047656 and available on <https://maharera.mahaonline.gov.in>, valid up to 30.06.2028

Disclaimer: This Project is being developed by Mahindra Lifespace Developers Limited ("MLDL") in phased manner. This document is an artistic conceptualization for illustration and representation purpose only and does not purport to exactly replicate the project. This communication is purely conceptual and not a legal offering. The information contained herein is only indicative of the kind of development that is proposed in Phase I and is subject to change with requisite approvals. MLDL reserves the right to make any changes or alterations. T&C apply.

Master Plan



Clubhouse – 01 area

5970 sq.ft

Amenities

- Open Air Lounge
- Multipurpose Sports Court
- Celebration Hall - 1
- Cinema Lounge
- Health Club - 1
- Rec Club
- Indoor Badminton Courts
- Indoor Kids Playzone
- Guest Rooms
- Celebration Lawn
- Swimming Pool and Kids Pool
- Jogging Track
- Cricket Nets
- Elders Park
- Work Pods
- Pet Pawklet

The project "Codename QUAD" is registered with MahaRERA as "Mahindra Citadel Phase 1" under MahaRERA no. P52100047656 and available on <https://maharera.mahaonline.gov.in>, valid up to 30.06.2028

Disclaimer: This Project is being developed by Mahindra Lifespace Developers Limited ("MLDL") in phased manner. This document is an artistic conceptualization for illustration and representation purpose only and does not purport to exactly replicate the project. This communication is purely conceptual and not a legal offering. The information contained herein is only indicative of the kind of development that is proposed in Phase I and is subject to change with requisite approvals. MLDL reserves the right to make any changes or alterations. T&C apply.

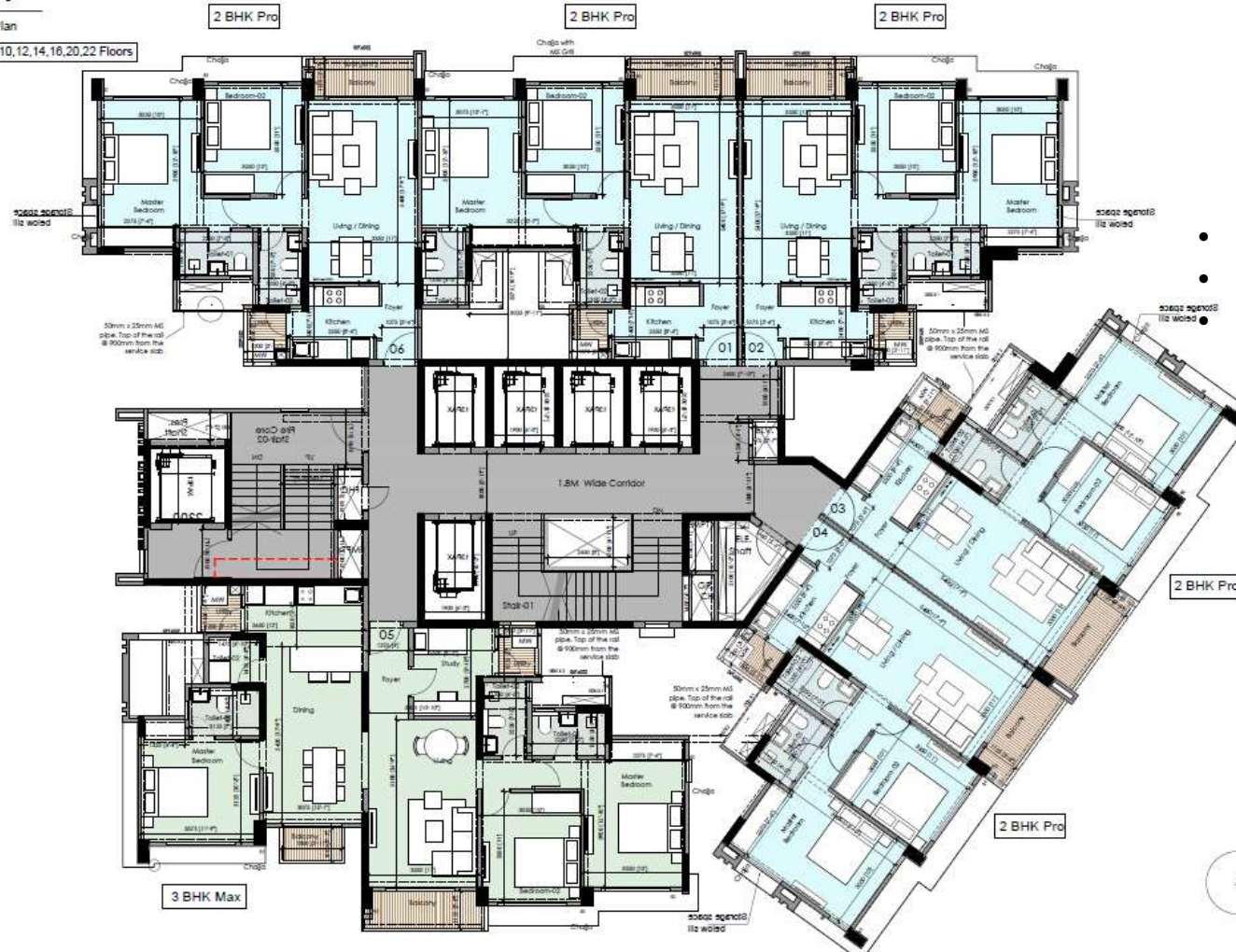
Tower A

Typical even floor plan

TOWER A

Typical Even Floor Plan

Floor plan on: 2, 4, 8, 10, 12, 14, 16, 20, 22 Floors



- 5 passenger lift
- 1 service lift
- 6 units to a core

The project "Codename QUAD" is registered with MahaRERA as "Mahindra Citadel Phase 1" under MahaRERA no. P52100047656 and available on <https://maharera.mahaonline.gov.in>, valid up to 30.06.2028

Disclaimer: This Project is being developed by Mahindra Lifespace Developers Limited ("MLDL") in phased manner. This document is an artistic conceptualization for illustration and representation purpose only and does not purport to exactly replicate the project. This communication is purely conceptual and not a legal offering. The information contained herein is only indicative of the kind of development that is proposed in Phase I and is subject to change with requisite approvals. MLDL reserves the right to make any changes or alterations. T&C apply.

Tower A

Typical odd floor plan

TOWER A

Typical Odd Floor Plan

Floor plan on: 5,7,9,11,15,17,19,21,23 Floors



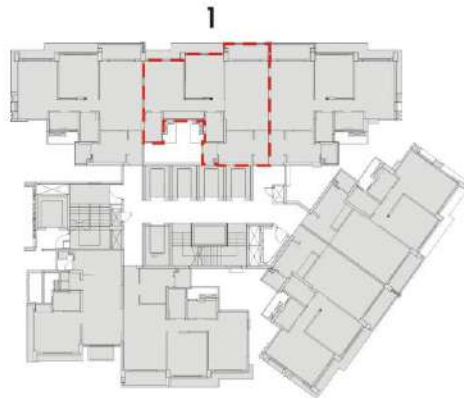
- 5 passenger lift
- 1 service lift
- 6 units to a core

The project "Codename QUAD" is registered with MahaRERA as "Mahindra Citadel Phase 1" under MahaRERA no. P52100047656 and available on <https://maharera.mahaonline.gov.in>, valid up to 30.06.2028

Disclaimer: This Project is being developed by Mahindra Lifespace Developers Limited ("MLDL") in phased manner. This document is an artistic conceptualization for illustration and representation purpose only and does not purport to exactly replicate the project. This communication is purely conceptual and not a legal offering. The information contained herein is only indicative of the kind of development that is proposed in Phase I and is subject to change with requisite approvals. MLDL reserves the right to make any changes or alterations. T&C apply.

2 BHK PRO

AREA	SQM.	SQFT.
CARPET	59.70	642.61
BALCONY	3.53	38.00
BALCONY(ENCLOSED)	2.95	31.75
BALCONY(UTILITY)	1.79	19.27
AGGREGATE	67.97	731.63



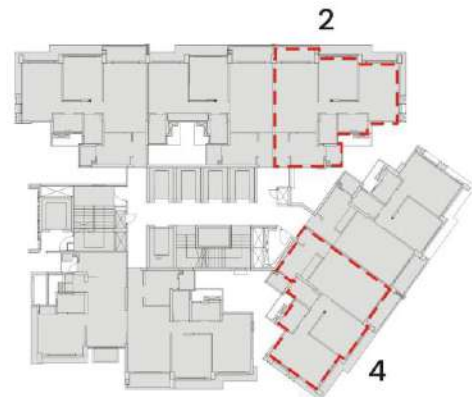
KEY PLAN



TOWER A - UNIT PLAN
2ND TO 23RD FLOORS

2 BHK PRO

AREA	SQM.	SQFT.
CARPET	59.70	642.61
BALCONY	3.53	38.00
BALCONY(ENCLOSED)	2.63	28.31
BALCONY(UTILITY)	2.03	21.85
AGGREGATE	67.89	730.77



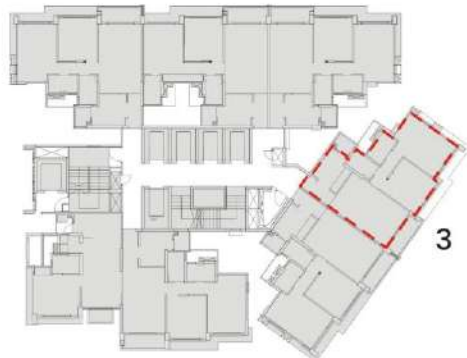
KEY PLAN



TOWER A - UNIT PLAN
2ND TO 23RD FLOORS

2 BHK PRO

AREA	SQM.	SQFT.
CARPET	59.70	642.61
BALCONY	3.53	38.00
BALCONY(ENCLOSED)	2.63	28.31
BALCONY(UTILITY)	2.03	21.85
AGGREGATE	67.89	730.77



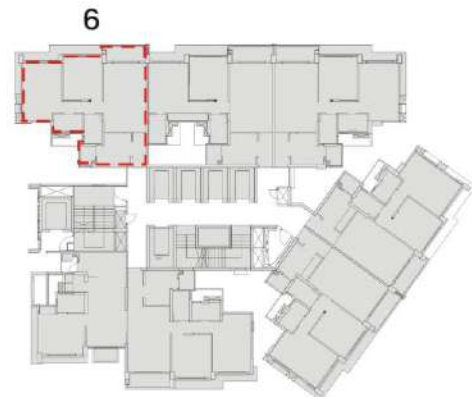
KEY PLAN



TOWER A - UNIT PLAN
2ND TO 23RD FLOORS

2 BHK PRO

AREA	SQM.	SQFT.
CARPET	59.70	642.61
BALCONY	3.53	38.00
BALCONY(ENCLOSED)	2.63	28.31
BALCONY(UTILITY)	2.03	21.85
AGGREGATE	67.89	730.77



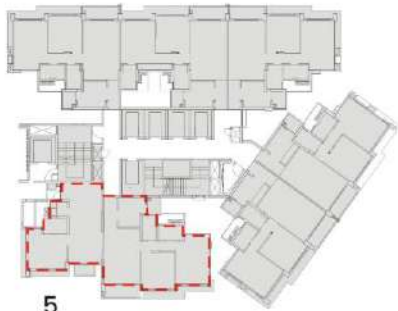
KEY PLAN



TOWER A - UNIT PLAN
2,4,5,6,7,9,10,11,12,14,15,16,17,19,20,21,22,23 FLOORS

3 BHK MAX

AREA	SQM.	SQFT.
CARPET	104.97	1129.90
BALCONY	5.63	60.60
BALCONY(UTILITY)	3.88	41.76
AGGREGATE	114.48	1232.26



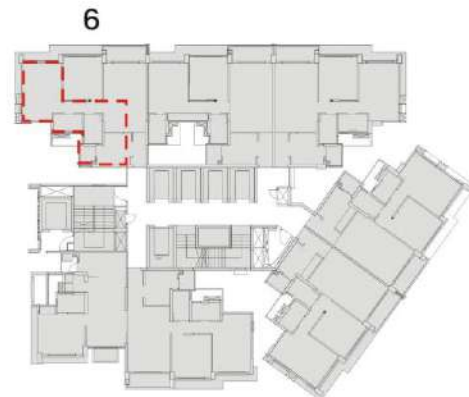
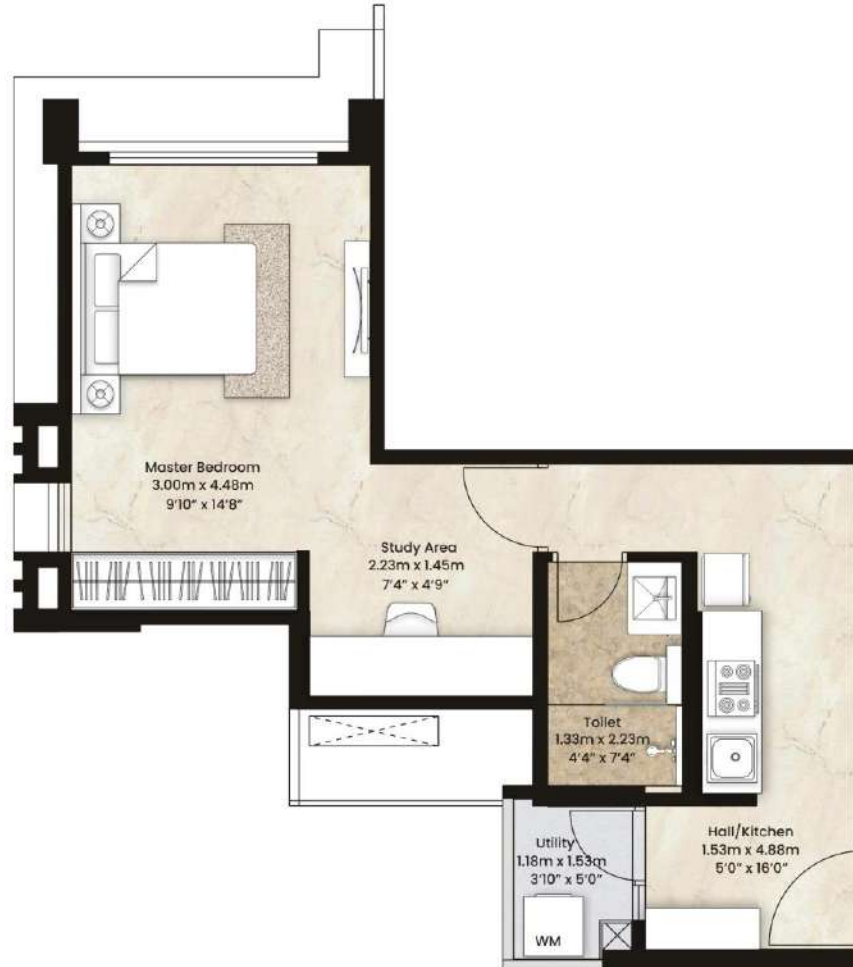
KEY PLAN



TOWER A - UNIT PLAN
2ND TO 23RD FLOORS

STUDIO

AREA	SQM.	SQFT.
CARPET	31.92	343.59
BALCONY(UTILITY)	2.02	21.74
AGGREGATE	33.94	365.33



KEY PLAN



TOWER A - UNIT PLAN
3,8,13,18 FLOORS

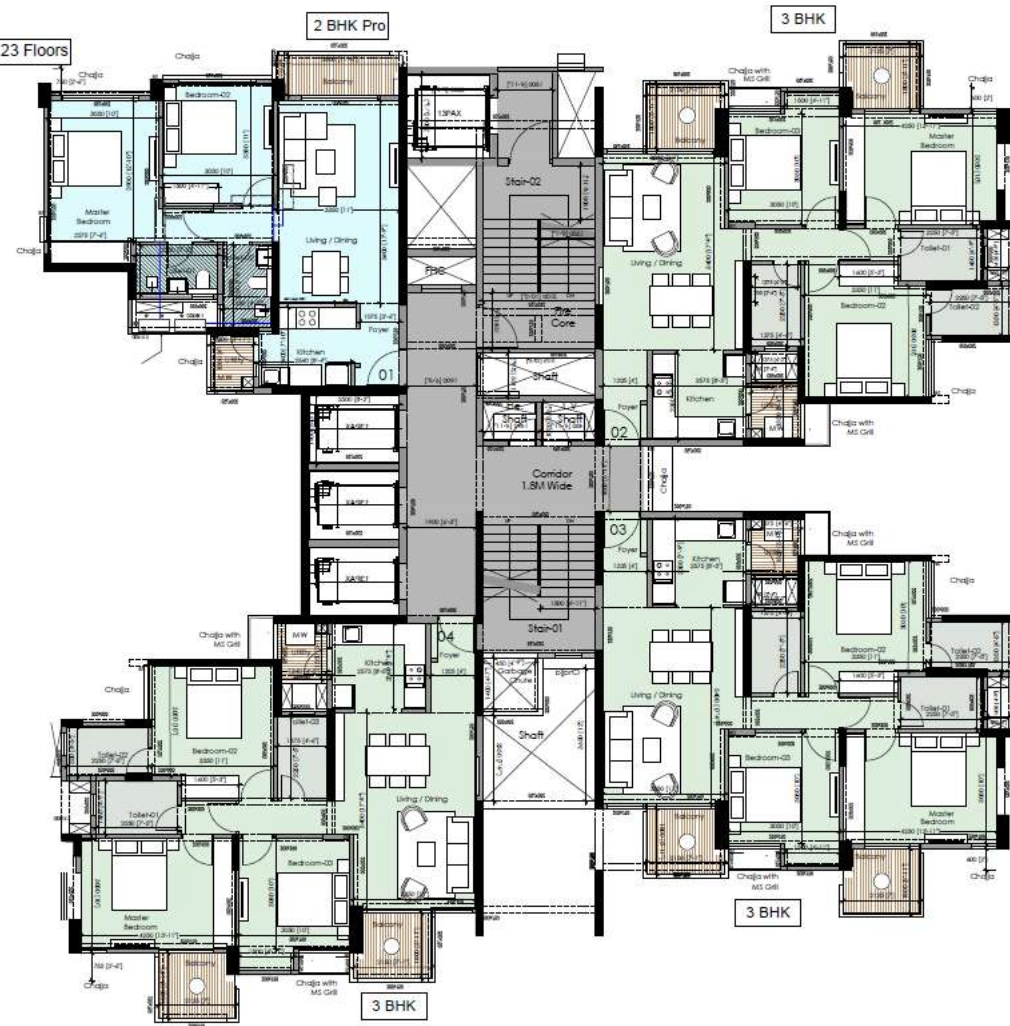
Tower B

Typical odd floor plan

TOWER B

Typical odd Level Plan

Floor plan on: 5, 7, 9, 11, 15, 17, 19, 21, 23 Floors



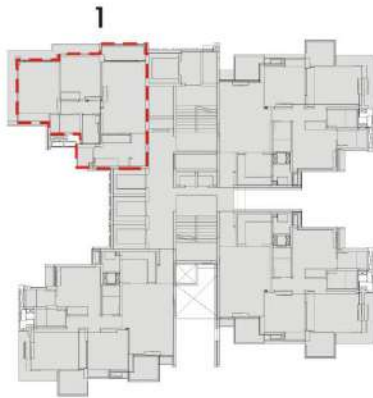
- 3 passenger lift
- 1 service lift
- 4 units to a core

The project "Codename QUAD" is registered with MahaRERA as "Mahindra Citadel Phase 1" under MahaRERA no. P52100047656 and available on <https://maharera.mahaonline.gov.in>, valid up to 30.06.2028

Disclaimer: This Project is being developed by Mahindra Lifespace Developers Limited ("MLDL") in phased manner. This document is an artistic conceptualization for illustration and representation purpose only and does not purport to exactly replicate the project. This communication is purely conceptual and not a legal offering. The information contained herein is only indicative of the kind of development that is proposed in Phase I and is subject to change with requisite approvals. MLDL reserves the right to make any changes or alterations. T&C apply.

2 BHK PRO

AREA	SQM.	SQFT.
CARPET	59.70	642.61
BALCONY	3.53	38.00
BALCONY(ENCLOSED)	2.63	28.31
BALCONY(UTILITY)	2.03	21.85
AGGREGATE	67.89	730.77



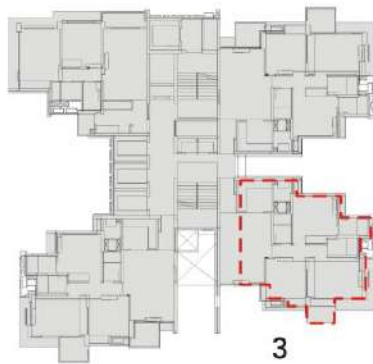
KEY PLAN



TOWER B - UNIT PLAN
3RD TO 23RD FLOORS

2 BHK MAX

AREA	SQM.	SQFT.
CARPET	58.74	632.28
BALCONY	2.84	30.57
BALCONY(ENCLOSED)	2.62	28.20
BALCONY(UTILITY)	2.27	24.43
TERRACE	3.63	39.07
AGGREGATE	70.10	754.56



3

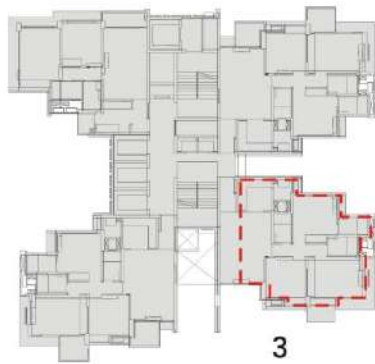
KEY PLAN



TOWER B - UNIT PLAN
3RD & 13TH FLOORS

2 BHK

AREA	SQM.	SQFT.
CARPET	58.27	627.22
BALCONY	2.84	30.57
BALCONY(ENCLOSED)	2.62	28.20
BALCONY(UTILITY)	2.27	24.43
AGGREGATE	66.00	710.42



3

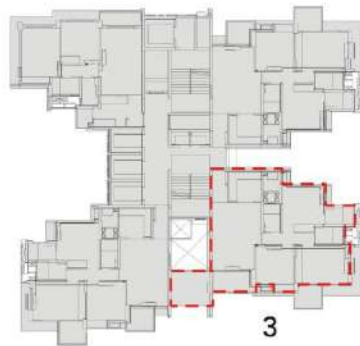
KEY PLAN



TOWER B - UNIT PLAN
8TH & 18TH FLOORS

3 BHK PRO

AREA	SQM.	SQFT.
CARPET	81.11	873.07
BALCONY	3.30	35.52
BALCONY(UTILITY)	2.27	24.43
TERRACE	10.58	113.88
AGGREGATE	97.26	1046.91



3

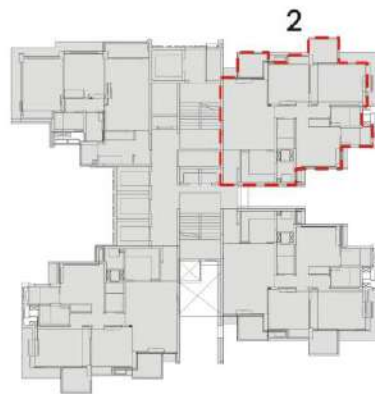
KEY PLAN



TOWER B - UNIT PLAN
4,6,10,12,14,16,20,22 FLOORS

3 BHK

AREA	SQM.	SQFT.
CARPET	81.45	876.73
BALCONY	7.18	77.29
BALCONY(UTILITY)	2.27	24.43
AGGREGATE	90.90	978.45



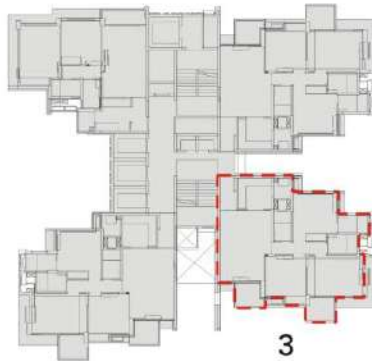
KEY PLAN



TOWER B - UNIT PLAN
3RD TO 23RD FLOORS

3 BHK

AREA	SQM.	SQFT.
CARPET	81.45	876.73
BALCONY	7.18	77.29
BALCONY(UTILITY)	2.27	24.43
AGGREGATE	90.90	978.45



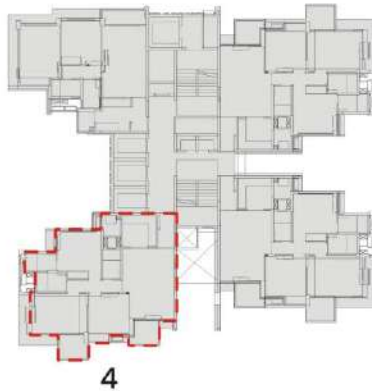
KEY PLAN



TOWER B - UNIT PLAN
5,7,9,11,15,17,19,21,23 FLOORS

3 BHK

AREA	SQM.	SQFT.
CARPET	81.45	876.73
BALCONY	7.18	77.29
BALCONY(UTILITY)	2.27	24.43
AGGREGATE	90.90	978.45



4

KEY PLAN



TOWER B - UNIT PLAN
3RD TO 23RD FLOORS

Tower C

Typical even floor plan

TOWER C

Typical Terrace floor plan

Floor plan on: 4, 6, 10, 12, 14, 16, 20, 22 Floors



- 3 passenger lift
- 1 service lift
- 4 units to a core

The project "Codename QUAD" is registered with MahaRERA as "Mahindra Citadel Phase 1" under MahaRERA no. P52100047656 and available on <https://maharera.mahaonline.gov.in>, valid up to 30.06.2028

Disclaimer: This Project is being developed by Mahindra Lifespace Developers Limited ("MLDL") in phased manner. This document is an artistic conceptualization for illustration and representation purpose only and does not purport to exactly replicate the project. This communication is purely conceptual and not a legal offering. The information contained herein is only indicative of the kind of development that is proposed in Phase 1 and is subject to change with requisite approvals. MLDL reserves the right to make any changes or alterations. T&C apply.

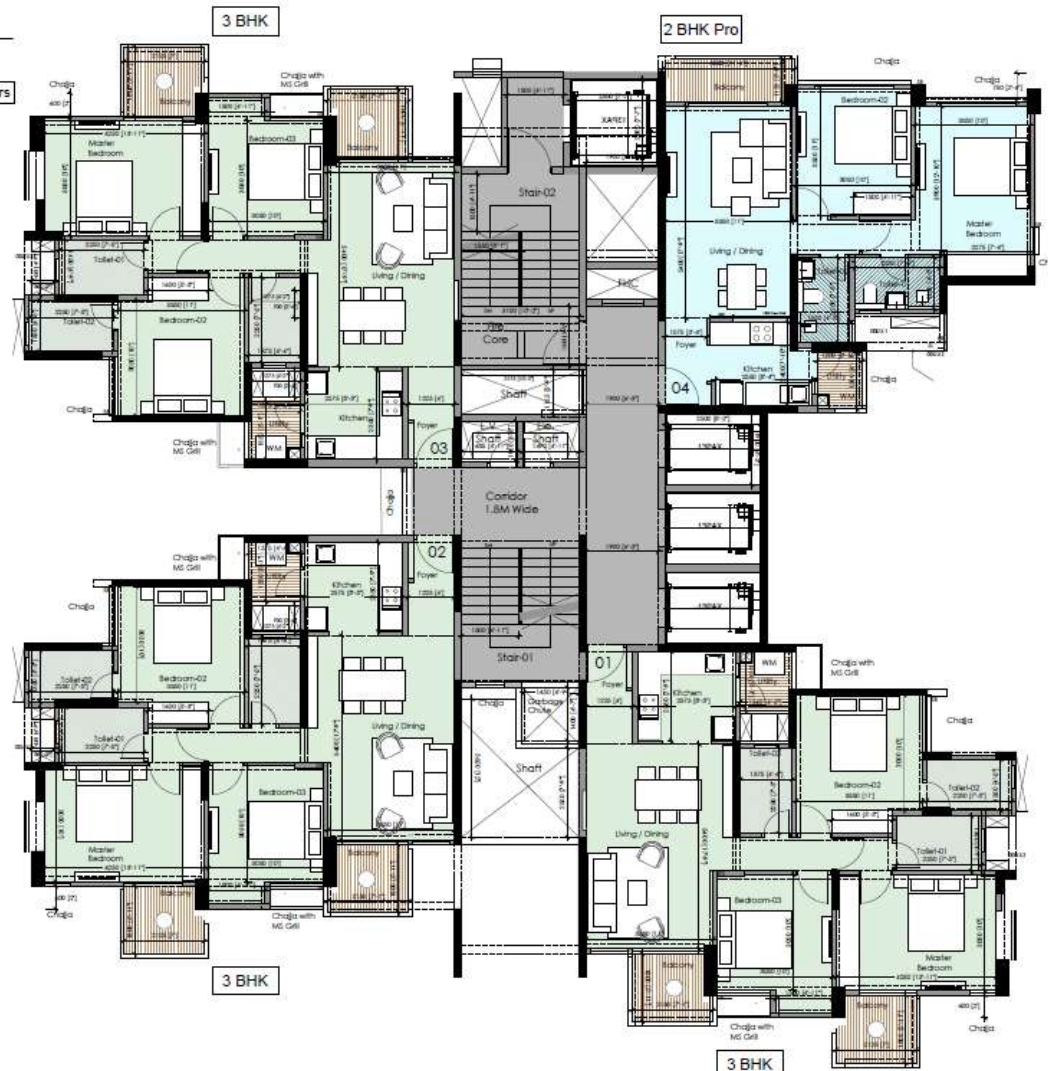
Tower C

Typical odd floor plan

TOWER C

Typical odd Level Plan

Floor plan on: 5,7,8,11,15,17,19,21,23 Floors



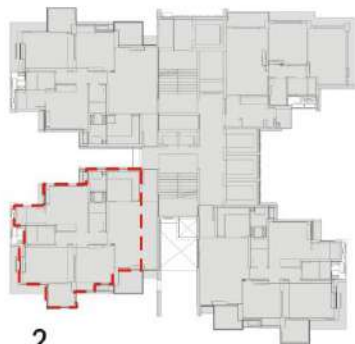
- 3 passenger lift
- 1 service lift
- 4 units to a core

The project "Codename QUAD" is registered with MahaRERA as "Mahindra Citadel Phase 1" under MahaRERA no. P52100047656 and available on <https://maharera.mahaonline.gov.in>, valid up to 30.06.2028

Disclaimer: This Project is being developed by Mahindra Lifespace Developers Limited ("MLDL") in phased manner. This document is an artistic conceptualization for illustration and representation purpose only and does not purport to exactly replicate the project. This communication is purely conceptual and not a legal offering. The information contained herein is only indicative of the kind of development that is proposed in Phase I and is subject to change with requisite approvals. MLDL reserves the right to make any changes or alterations. T&C apply.

2 BHK MAX

AREA	SQM.	SQFT.
CARPET	58.74	632.28
BALCONY	2.84	30.57
BALCONY(ENCLOSED)	2.62	28.20
BALCONY(UTILITY)	2.27	24.43
TERRACE	3.63	39.07
AGGREGATE	70.10	754.56



2

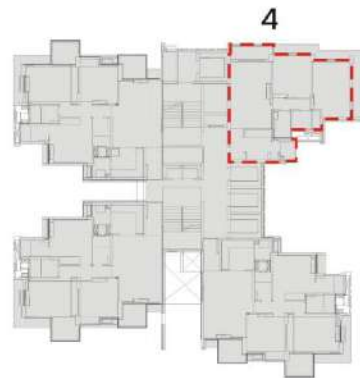
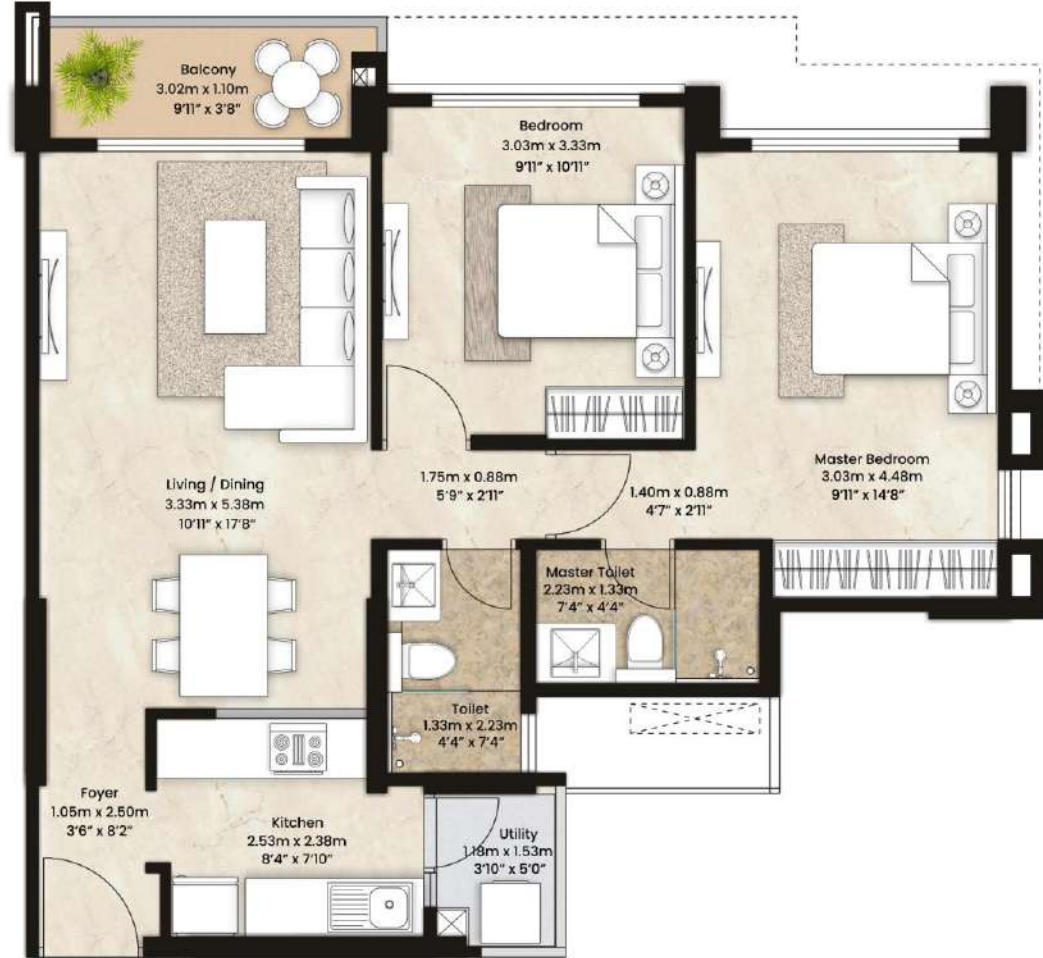
KEY PLAN



TOWER C - UNIT PLAN
3RD & 13TH FLOORS

2 BHK PRO

AREA	SQM.	SQFT.
CARPET	59.70	642.61
BALCONY	3.53	38.00
BALCONY(ENCLOSED)	2.63	28.31
BALCONY(UTILITY)	2.03	21.85
AGGREGATE	67.89	730.77



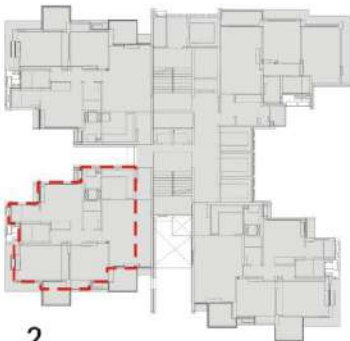
KEY PLAN



TOWER C - UNIT PLAN
3RD TO 23RD FLOORS

2 BHK

AREA	SQM.	SQFT.
CARPET	58.27	627.22
BALCONY	2.84	30.57
BALCONY(ENCLOSED)	2.62	28.20
BALCONY(UTILITY)	2.27	24.43
AGGREGATE	66.00	710.42



2

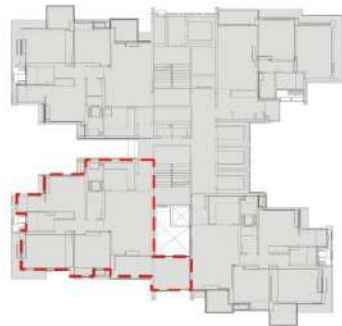
KEY PLAN



TOWER C - UNIT PLAN
8TH & 18TH FLOORS

3 BHK PRO

AREA	SQM.	SQFT.
CARPET	81.11	873.07
BALCONY	3.30	35.52
BALCONY(UTILITY)	2.27	24.43
TERRACE	10.58	113.88
AGGREGATE	97.26	1046.91



2

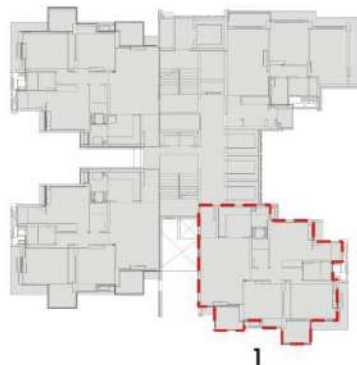
KEY PLAN



TOWER C - UNIT PLAN
2,4,6,10,12,14,16,20,22 FLOORS

3 BHK

AREA	SQM.	SQFT.
CARPET	81.45	876.73
BALCONY	7.18	77.29
BALCONY(UTILITY)	2.27	24.43
AGGREGATE	90.90	978.45



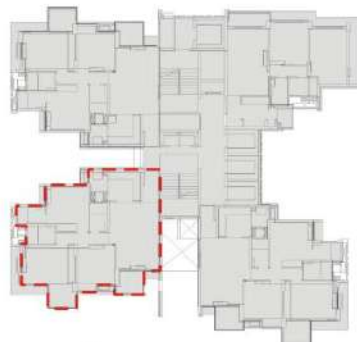
KEY PLAN



TOWER C - UNIT PLAN
3RD TO 23RD FLOORS

3 BHK

AREA	SQM.	SQFT.
CARPET	81.45	876.73
BALCONY	7.18	77.29
BALCONY(UTILITY)	2.27	24.43
AGGREGATE	90.90	978.45



2

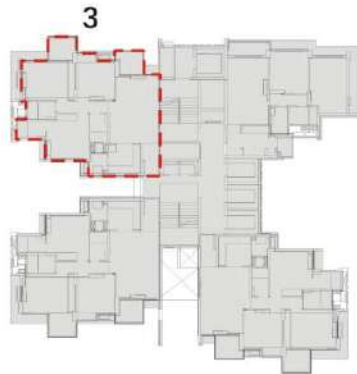
KEY PLAN



TOWER C - UNIT PLAN
5,7,9,11,15,17,19,21,23 FLOORS

3 BHK

AREA	SQM.	SQFT.
CARPET	81.45	876.73
BALCONY	7.18	77.29
BALCONY(UTILITY)	2.27	24.43
AGGREGATE	90.90	978.45



KEY PLAN



TOWER C - UNIT PLAN
3RD TO 23RD FLOORS

Tower D - Typical even floor plan

TOWER D

Typical Even floor plan

Floor plan on: 2,4,6,10,12,14,16,20,22Floors



- 5 passenger lift
- 1 service lift
- 6 units to a core

The project "Codename QUAD" is registered with MahaRERA as "Mahindra Citadel Phase 1" under MahaRERA no. P52100047656 and available on <https://maharera.mahaonline.gov.in>, valid up to 30.06.2028

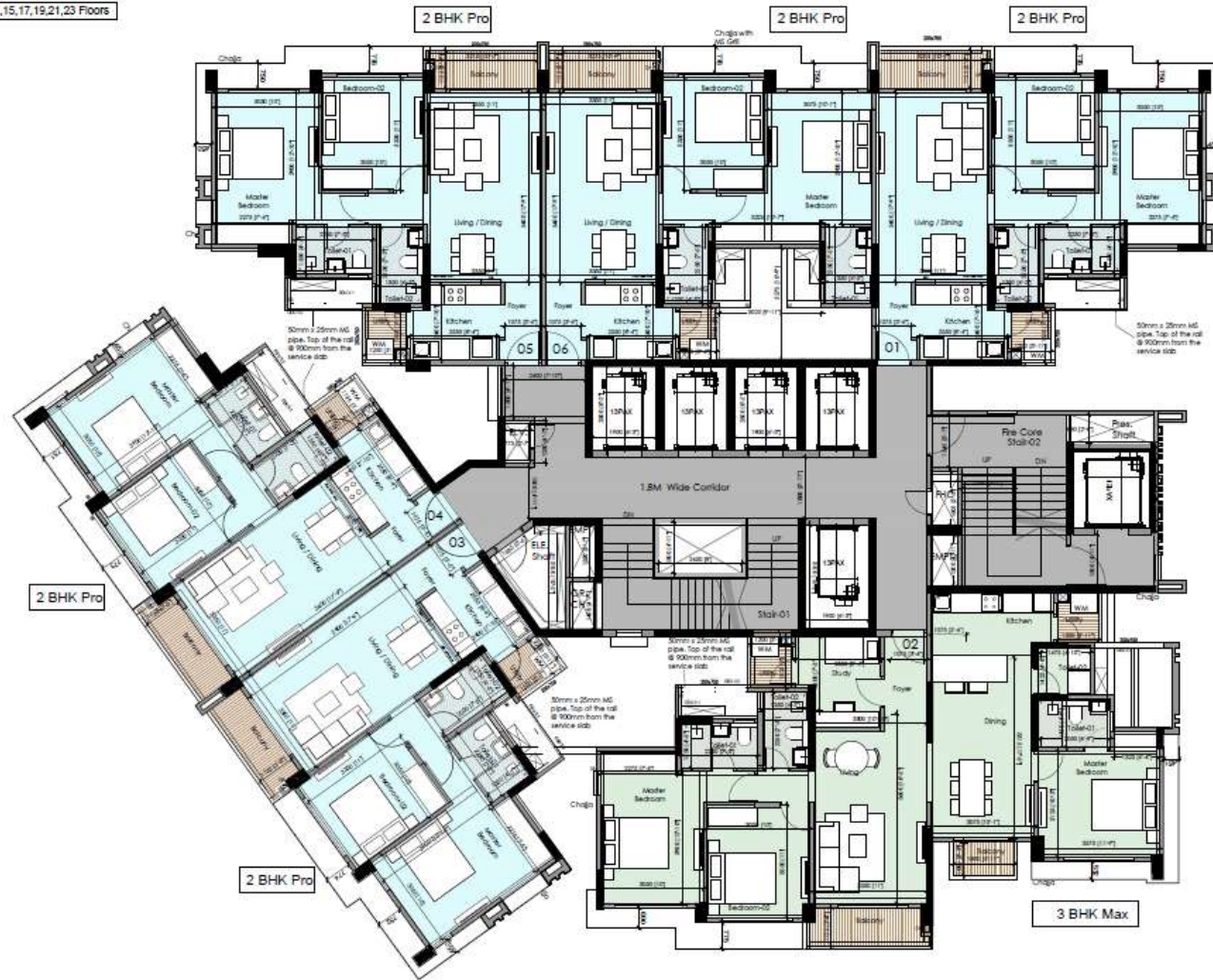
Disclaimer: This Project is being developed by Mahindra Lifespace Developers Limited ("MLDL") in phased manner. This document is an artistic conceptualization for illustration and representation purpose only and does not purport to exactly replicate the project. This communication is purely conceptual and not a legal offering. The information contained herein is only indicative of the kind of development that is proposed in Phase I and is subject to change with requisite approvals. MLDL reserves the right to make any changes or alterations. T&C apply.

Tower D – Typical odd floor plan

TOWER D

Typical odd floor plan

Floor plan on: 5, 7, 9, 11, 15, 17, 19, 21, 23 Floors



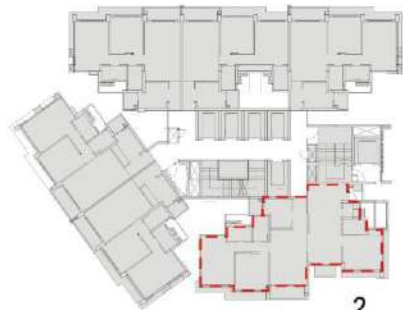
- 5 passenger lift
- 1 service lift
- 6 units to a core

The project "Codename QUAD" is registered with MahaRERA as "Mahindra Citadel Phase 1" under MahaRERA no. P52100047656 and available on <https://maharera.mahaonline.gov.in>, valid up to 30.06.2028

Disclaimer: This Project is being developed by Mahindra Lifespace Developers Limited ("MLDL") in phased manner. This document is an artistic conceptualization for illustration and representation purpose only and does not purport to exactly replicate the project. This communication is purely conceptual and not a legal offering. The information contained herein is only indicative of the kind of development that is proposed in Phase I and is subject to change with requisite approvals. MLDL reserves the right to make any changes or alterations. T&C apply.

3 BHK MAX

AREA	SQM.	SQFT.
CARPET	104.87	1129.90
BALCONY	5.63	60.60
BALCONY(UTILITY)	3.88	41.76
AGGREGATE	114.48	1232.26



2

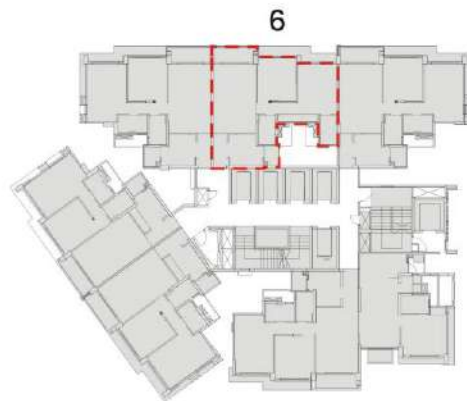
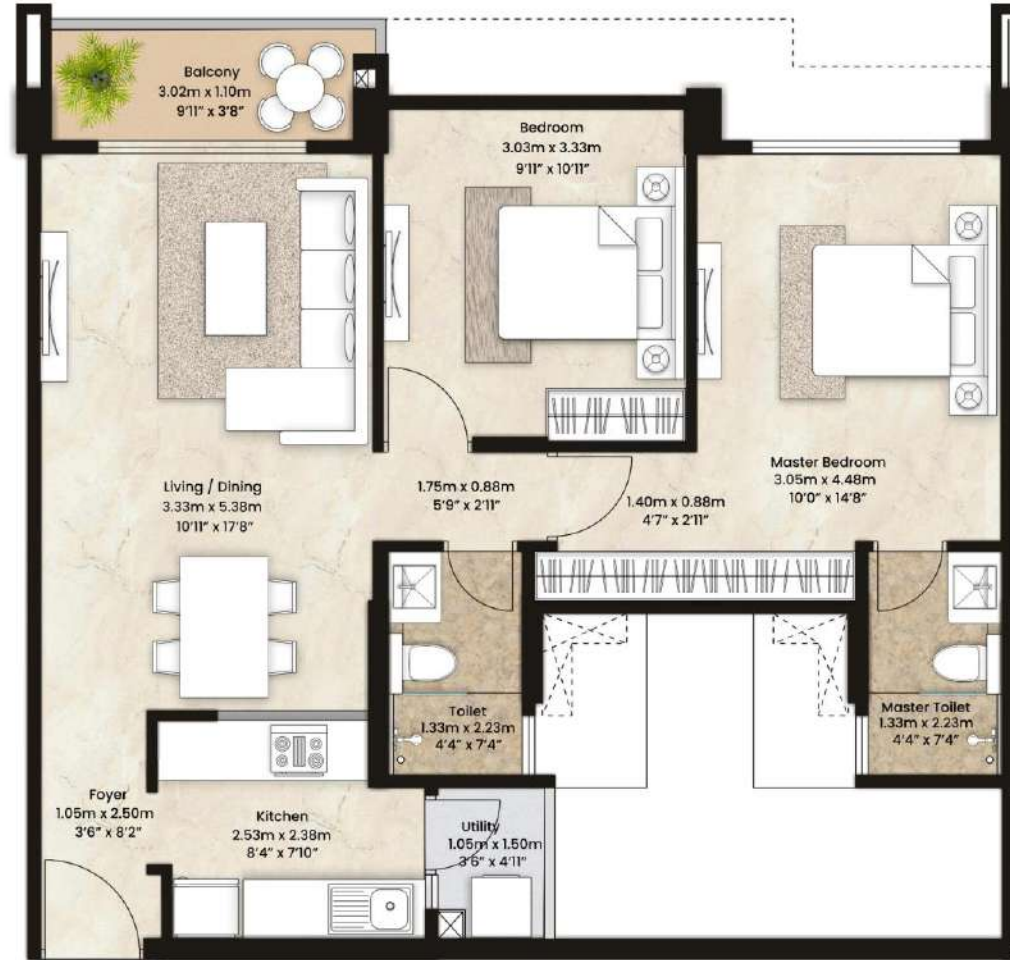
KEY PLAN



TOWER D - UNIT PLAN
2ND TO 23RD FLOORS

2 BHK PRO

AREA	SQM.	SQFT.
CARPET	59.70	642.61
BALCONY	3.53	38.00
BALCONY(ENCLOSED)	2.95	31.75
BALCONY(UTILITY)	1.79	19.27
AGGREGATE	67.97	731.63



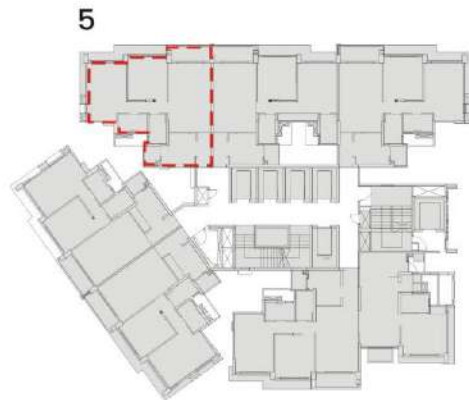
KEY PLAN



TOWER D - UNIT PLAN
2ND TO 23RD FLOORS

2 BHK PRO

AREA	SQM.	SQFT.
CARPET	59.70	642.61
BALCONY	3.53	38.00
BALCONY(ENCLOSED)	2.63	28.31
BALCONY(UTILITY)	2.03	21.85
AGGREGATE	67.89	730.77



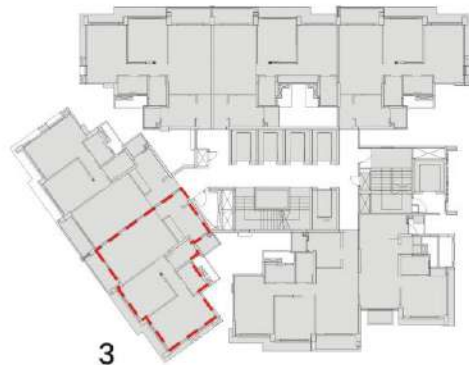
KEY PLAN



TOWER D - UNIT PLAN
2ND TO 23RD FLOORS

2 BHK PRO

AREA	SQM.	SQFT.
CARPET	59.70	642.61
BALCONY	3.53	38.00
BALCONY(ENCLOSED)	2.63	28.31
BALCONY(UTILITY)	2.03	21.85
AGGREGATE	67.89	730.77



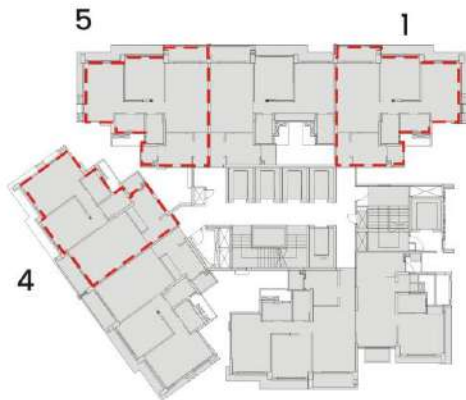
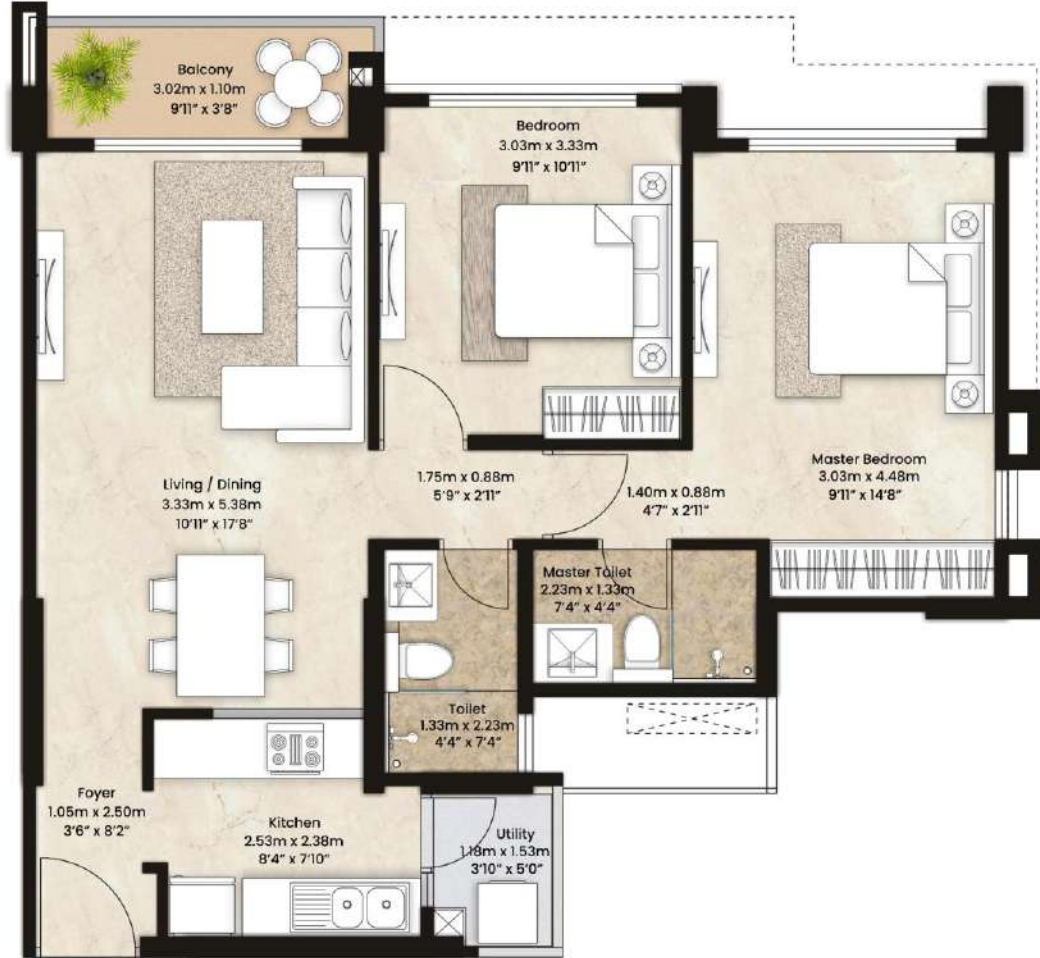
KEY PLAN



TOWER D - UNIT PLAN
2 to 23 (EXCLUDING 3, 8, 13 & 18) FLOORS

2 BHK PRO

AREA	SQM.	SQFT.
CARPET	59.70	642.61
BALCONY	3.53	38.00
BALCONY(ENCLOSED)	2.63	28.31
BALCONY(UTILITY)	2.03	21.85
AGGREGATE	67.89	730.77



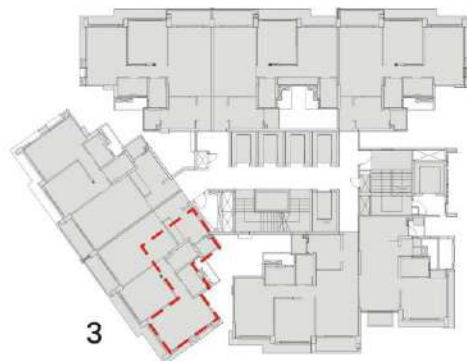
KEY PLAN



TOWER D - UNIT PLAN
2ND TO 23RD FLOORS

STUDIO

AREA	SQM.	SQFT.
CARPET	31.92	343.59
BALCONY(UTILITY)	2.02	21.74
AGGREGATE	33.94	365.33



KEY PLAN



TOWER D - UNIT PLAN
3,8,13,18 FLOORS

Thank you

The project "Codename QUAD" is registered with MahaRERA as "Mahindra Citadel Phase 1" under MahaRERA no. P52100047656 and available on <https://maharera.mahaonline.gov.in>, valid up to 30.06.2028

Disclaimer: This Project is being developed by Mahindra Lifespace Developers Limited ("MLDL") in phased manner. This document is an artistic conceptualization for illustration and representation purpose only and does not purport to exactly replicate the project. This communication is purely conceptual and not a legal offering. The information contained herein is only indicative of the kind of development that is proposed in Phase I and is subject to change with requisite approvals. MLDL reserves the right to make any changes or alterations. T&C apply.